



An Eye on Talent

Olympiad Aptitude Test Science- Grade VI

1. Consider the following statements:

- I. Immiscible liquids are separated by using separating funnel.
- II. Before sedimentation, decantation is done.
- III. Milk is a mixture.
- IV. Winnowing is based on the difference in weights of different substances present in a mixture.

The true statement(s) is/are

- a. I, II and III
- b. II, III and IV
- c. I, III and IV
- d. I and IV

2. Four mixtures are given below:

- I. Kidney beans and chickpeas
- II. Pulses and rice
- III. Rice flakes and corn
- IV. Potato wafers and biscuits

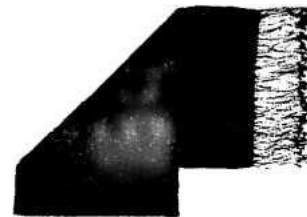
Which of these can be separated by the method of winnowing?

- a. I and II
- b. II and III
- c. I and III
- d. III and IV

3. During summer, Vipul carries water in a transparent plastic bottle to his school. One day, he left his bottle in the school. The bottle still had some water left in it. The following day, he observed some water droplets on the inner surface of the empty portion of the bottle. These droplets of water were formed due to

- a. boiling and condensation
- b. evaporation and saturation
- c. evaporation and condensation
- d. condensation and saturation

4. The picture given below is of pashmina shawl. It is of very fine quality and liked by every lady. It is mainly obtained from



- a. camel
- b. goat
- c. sheep
- d. yak

5. Some words related to fibre to fabric are jumbled up. Opt the correct jumbled and rearranged option.

- a. GHSEIRNE-SHEERING
- b. AAORGNE-ANGOERA
- c. AAAPLC - ALPACA
- d. RREBLMYA – MALBERRY

6. **Assertion (A)** Water does not provide nutrients, yet it is an important component of food.

Reason (R) It helps to absorb nutrients from food.

- a. Both A and R are true and R is the correct explanation of A.
- b. Both A and R are true, but R is not the correct explanation of A.
- c. A is true, but R is false,
- d. Both A and R are false.

7. Which of the above type of vegetable oil is good for our health?

- a. Corn
- b. Soybean
- c. Olive
- d. Canola

8. Aquatic animals can survive in water just because they adopt various

characteristics for the survival.

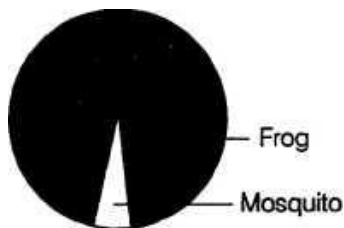
Which statements are true about the adaptations for movement in water for a dolphin and a typical fish? Select the correct option.

- A. Each has a streamlined body shape.
- B. Each has a tail to propel itself forward in the water.
- C. Each has a swim bladder to keep it afloat in water.
- D. Each has a pair of flippers to keep its balance in water.

Codes

- a. A and B b. A and D
- c. B and C d. C and D

9. The pie chart shows the time taken (in days) for a frog and a mosquito to develop from an egg to an adult.



Assuming they have a similar rate of reproduction, which of the following statements are true?

- A. Within a given time frame, there will be more adult mosquitoes than adult frogs.
- B. From the pie chart, we can tell that there is a balanced food relationship between the frog and the mosquito.
- C. Rearing frogs to get rid of mosquitoes is not effective.

Codes

- a. A and B b. A and C
- c. B and C d. A, B and C

10. Consider the following statements and choose the incorrect ones.

I. Reflection can be observed both in case

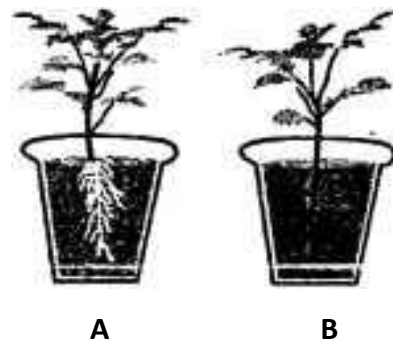
of opaque as well as translucent objects.

- II. Images formed by reflection are always virtual.
- III. Images formed on standing water are laterally inverted.

Codes

- a. Only b. Only II
- c. Only III d. All of these

11. Observe the figure given alongside. Accordingly opt the option that describes what will not occur in B, but occur in A, on the immediate hour after digging them into the soil.

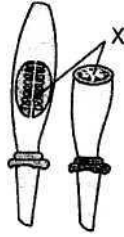


Codes

- a. A will absorb water, but B will not.
 - b. A will absorb oxygen from air, but B will not.
 - c. Both can absorb water and oxygen.
 - d. A will absorb carbon dioxide but B will not.
12. A boy fell off a tree and hurt his ankle. On examination the doctor confirmed that the ankle was fractured. Which of the following help in the examination of fracture?

	Symptom	Confirmation
a	Swelling on ankle	By X-ray
b	Redness on ankle	By CT scan
c	Swelling and redness	By visual appearance
d	Swelling and pain	By X-ray and visual appearance

13. We have taken the lowermost and swollen part of the pistil and cut it longitudinally and transversely. Now, it looks like as shown in the figure given below. Name the part labelled as X ?



a Style b Ovary c Stigma d Ovule

14.

- | | |
|-----------------|------------|
| I. Horse | Walking |
| II. Kangaroo - | Slithering |
| III. Snail | Creeping |
| IV. Cockroach - | Flving |
| V. Fish | Swimming |

Find incorrect combination/s

- | | |
|---------------|---------------|
| a. Only II | c. II and III |
| b. III and IV | d. Only IV |

15. Which of the following materials is/are not suitable for the core of an electromagnet?

- | | |
|-----------|--------------|
| a. Steel | c. Soft Iron |
| b. Copper | d. Aluminium |

16. Bathroom scales have springs in them to measure weight. The springs_____ when the weight is placed on them.

- Are stretched
- Are compressed
- Exert a force on weight
- Exert the force of gravity

17. The substances which can be subline.

- Naphthalene
- Water
- Iodine
- Ammonium Chloride

18. Which of the following statement is true?

- Energy is stored when air is compressed.
- Compressed air exerts a force.
- Water can't be compressed.
- All the above

19. Where you will get saline water?

- Wells
- Ponds
- Rainwater
- Sea

20. Which of the following is a natural luminous source?

- Candle
- Glow worm
- Torch light
- sun